

# Boom Lift Product Brochure

 ELECTRIC  DIESEL



# ■ Contents

01

## Electric Articulating Boom Lift

Platform Height: 9.3m~20.5m

Page 04



02

## Electric Telescopic Boom Lift

Platform Height: 16m~26.3m

Page 14



03

## Crawler Spider Boom Lift

Platform Height: 8m~17.3m

Page 18



04

## Towable Boom Lift

Platform Height: 8m~15.85m

Page 22



05

## Diesel Articulating Boom Lift

Platform Height: 14m~30m

Page 26



06

## Diesel Telescopic Boom Lift

Platform Height: 28m~56m

Page 32



## Boom Lift Series

Boom lift series offers platform height from 8 to 56 meters, with electric and diesel power developed on the same platform, applicable for a wide range of aerial jobs. All of these boom lifts are suitable for standard container transport.



### Electric Articulating Boom Lift

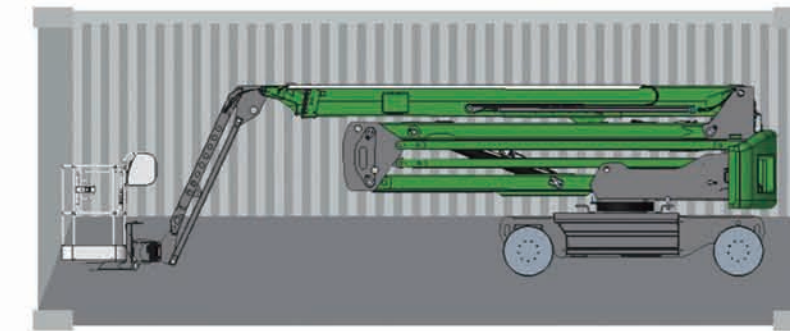
Electric Articulating Boom Lift has a maximum working height of 11.3 to 22.5 meters, with a maximum load of 350kg. Its electric-powered and articulating boom design provide a sustainable and flexible solution for accessing elevated areas. Lithium and Lead-acid batteries are optional based on your work need.



20GP

### Electric Telescopic Boom Lift

Electric Telescopic Boom Lift has a maximum working height of 18 to 28.3 meters, with a maximum load of 450kg. LFP and LA batteries are optional for your work requirements. It has Strong four-wheel off-road ability to adapt to multiple terrains. Energy saving, zero-emission, and little maintenance cost.



40HQ

### Towable Boom Lift

Towable Boom Lift has a maximum working height of 10 to 17.85 meters, with a maximum load of 200kg. It is equipped with battery power, zero pollution and noise. The automatic leveling system ensures a stable and safe work condition.

### Crawler Spider Boom Lift

Spider Boom Lift has a maximum working height of 10 to 19.3 meters, with a maximum load of 200kg. It has compact design and light self weight for easy mobility and storage. Flexible turning ability provides precise positioning and efficient work. The durable rubber track is anti-skid and can walk through uneven terrains.



9m 11m 12m 14m 16m 18m 20m 12m 14m 16m 16m 18m 20m 24m 26m 8m 10m 12m 14m 16m 18m

V09 V11 V12 V14 V16 V18 V20 V12M V14M V16M

J16 J18 J20 J24Li J26Li

S08C S10C S12C S14C S16C S18C



8m 10m 12m 14m 16m 14m 16m 18m 20m 24m 26m 30m 28m 32m 38m 42m 46m 56m

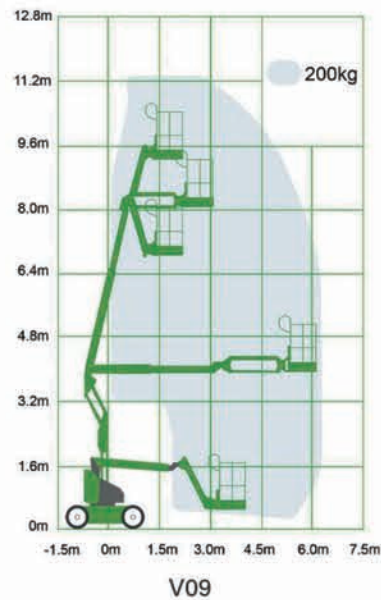
T08 T10 T12 T14 T16

V14D V16D V18D V20D V24D V26D V30D

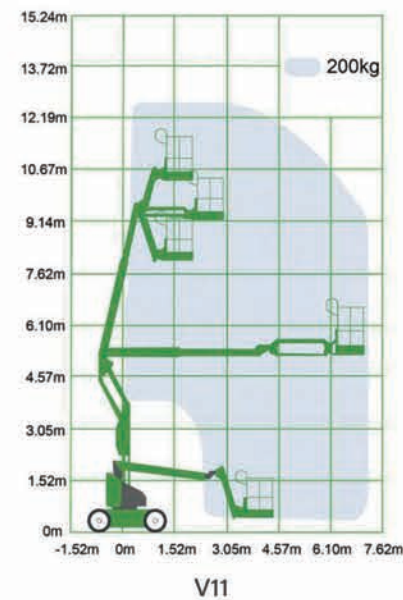
J28D J32D J38D J42D J46D J56D

# Electric Articulating Boom Lift

 Electric



V09



V11

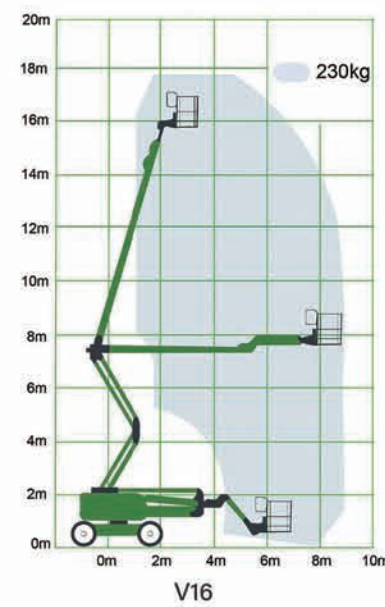
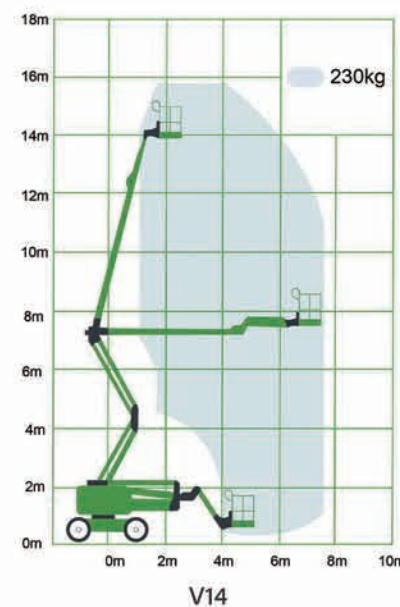
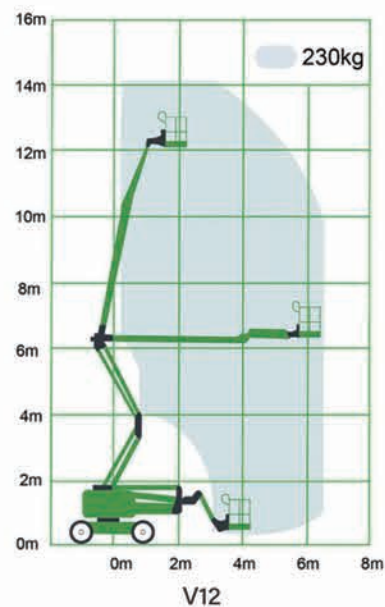
Model	V09	V11
<b>Specifications</b>		
Max. Working Height	11.3m	12.5m
Max. Platform Height	9.3m	10.5m
Max. Up and Over Clearance	4.3m	4.65m
Max. Working Radius	6.25m	7.15m
Platform Dimensions (Length x Width)	1.2*0.7m	1.2*0.7m
Length-Stowed	5.2m	5.6m
Width	1.27m	1.50m
Height-Stowed	2.0m	2.0m
Wheelbase	1.75m	1.95m
Ground Clearance-Center	0.14m	0.14m
Transport Length	3.8m	4.35m
<b>Productivity</b>		
Max. Lift Capacity	200kg	200kg
Platform Occupancy	2	2
Platform Rotation	±80°	±80°
Jib rotation	±70°	±70°
Turntable Rotation	355°	355°
Drive Speed-Stowed	5.0km/h	5.0km/h
Gradeability-Stowed	35%	35%
Max. Working Angle	3°	3°
Turning Radius (outside)	2.82m	3.23m
Drive and Steer	2×2	2×2
Weight	4800kg	5000kg
Tire	22×7×17	27×7×17
<b>Power</b>		
Battery	48V/300Ah	48V/300Ah
Pump Motor	4kw	4kw
Drive Motor	3.3kw	3.3kw
Control Voltage	24V	24V
Charger	48V/35A	48V/35A
Hydraulic Tank	20L	20L
Emergency Power System	24V	24V
<b>Optional</b>		
LFP Battery		optional
Solid Rough Terrain Tire		optional

# Electric Articulating Boom Lift

 Electric

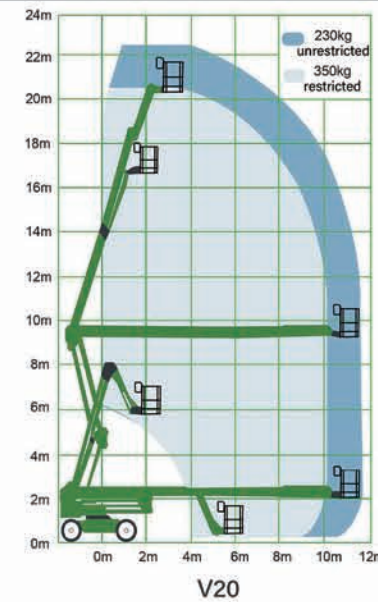
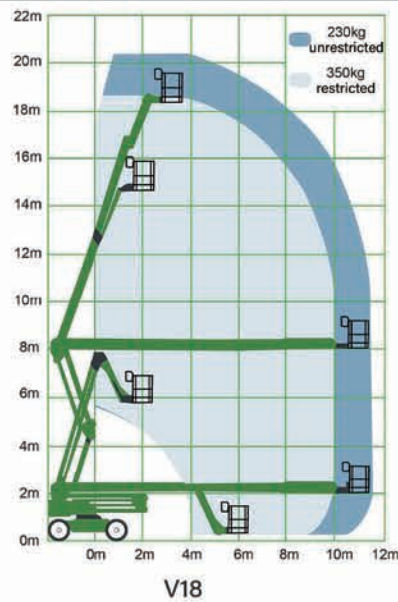


Model	V12	V14	V16
<b>Specifications</b>			
Max. Working Height	14.2m	15.8m	17.7m
Max. Platform Height	12.2m	13.8m	15.7m
Max. Up and Over Clearance	6.2m	7.0m	7.5m
Max. Working Radius	6.5m	7.5m	8.9m
Platform Dimensions (Length x Width)	1.2*0.7m	1.4*0.7m	1.4*0.7m
Length-Stowed	5.6m	6.5m	7.2m
Width	1.68m	1.76m	1.90m
Height-Stowed	1.98m	2.0m	2.0m
Wheelbase	2.0m	2.0m	2.0m
Ground Clearance-Center	0.25m	0.25m	0.25m
<b>Productivity</b>			
Max. Lift Capacity	230kg	230kg	230kg
Platform Occupancy	2	2	2
Platform Rotation	/	±80°	±80°
Jib rotation	±70°	±70°	±70°
Turntable Rotation	355°	355°	355°
Drive Speed-Stowed	5.0km/h	5.0km/h	5.0km/h
Gradeability-Stowed	30%	35%	30%
Max. Working Angle	3°	3°	3°
Turning Radius (outside)	2.8m	2.83m	2.97m
Drive and Steer	2×2	2×2	2×2
Weight	4320kg	5960kg	6630kg
Tire	28*9-15	250-15	250-15
<b>Power</b>			
Battery	48V/220Ah	48V/300Ah	48V/300Ah
Pump Motor	4kw	4kw	4kw
Drive Motor	3.3kw	3.3kw	3.3kw
Control Voltage	12V/24V	24V	24V
Charger	48V/20A	48V/35A	48V/35A
Hydraulic Tank	20L	20L	20L
Emergency Power System	12V/24V	24V	24V
<b>Optional</b>			
LFP Battery		optional	
Solid Non-marking Tires		optional	



# Electric Articulating Boom Lift

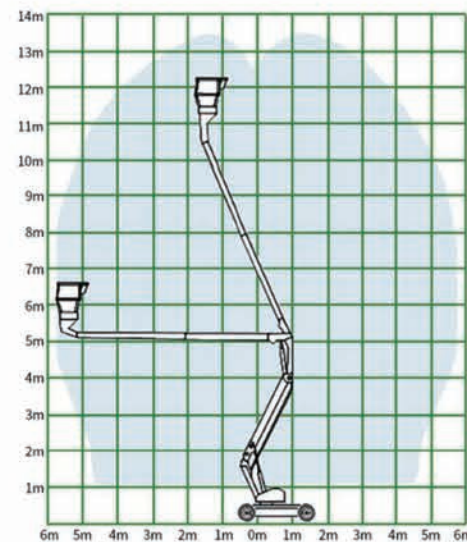
 Electric



Model	V18	V20
<b>Specifications</b>		
Max. Working Height	20.2m	22.5m
Max. Platform Height	18.2m	20.5m
Max. Up and Over Clearance	8.0m	9.4m
Max. Working Radius	11.6m	11.8m
Platform Dimensions (Length x Width)	1.8*0.76m	1.8*0.76m
Length-Stowed	8.49m	8.49m
Width	2.49m	2.49m
Height-Stowed	2.38m	2.38m
Wheelbase	2.5m	2.5m
Ground Clearance-Center	0.3m	0.3m
<b>Productivity</b>		
Max. Lift Capacity	230kg (unrestricted)/350kg (restricted)	230kg (unrestricted)/350kg (restricted)
Platform Occupancy	2/3	2/3
Platform Rotation	±80°	±80°
Jib rotation	±70°	±70°
Turntable Rotation	360° continuous	360° continuous
Drive Speed-Stowed	5.0km/h	5.0km/h
Gradeability-Stowed	45%	45%
Max. Working Angle	5°	5°
Turning Radius (outside)	4.18m	4.18m
Drive and Steer	4x2	4x2
Weight	9100kg	10000kg
Tire	33x12-20	33x12-20
<b>Power</b>		
Battery	48V/400Ah	48V/400Ah
Pump Motor	10-12kw	10-12kw
Drive Motor	3.3kw	3.3kw
Control Voltage	12V	12V
Charger	48V/60A	48V/60A
Hydraulic Tank	105L	105L
Emergency Power System	12V	12V
<b>Optional</b>		
LFP Battery		optional
Solid Non-marking Tires		optional

# M Series Electric Articulating Boom Lift

 Electric

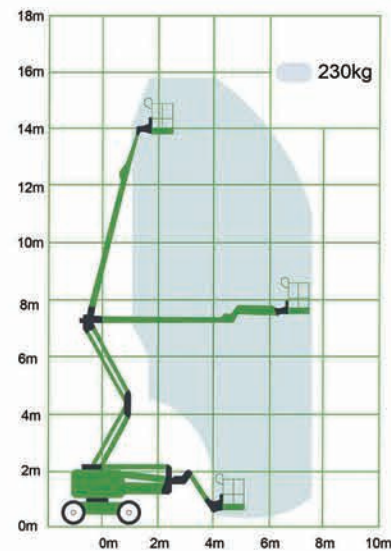


V12M

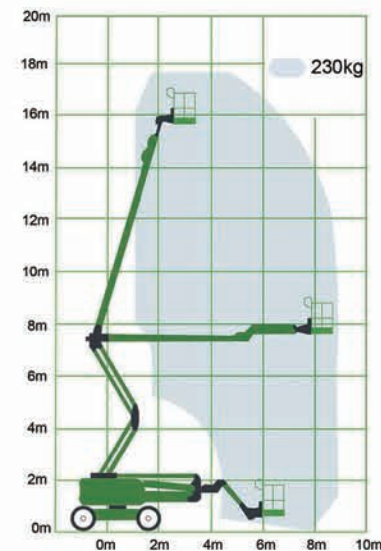
Model	V12M
<b>Specifications</b>	
Max. Working Height	13.5m
Max. Platform Height	11.5m
Max. Up and Over Clearance	5.4m
Max. Working Radius	5.63m
Platform Dimensions (Length x Width)	1.26*0.712m
Length-Stowed	4.04m
Width	1.50m
Height-Stowed	2.05m
Wheelbase	2.0m
Ground Clearance-Center	0.12m
<b>Productivity</b>	
Max. Lift Capacity	215kg
Platform Occupancy	2
Platform Rotation	±90°
Turntable Rotation	365° non-continuous
Raise Time	85~100s
Lower Time	70~85s
Max. Drive Speed (stowed)	4-5km/h
Max. Drive Speed (elevated)	0.8-1.2km/h
Max. Drive Height	11.5m
Gradeability	36%
Weight	3760kg
Tire	23*10*16 (black off-road) / 22*9*16 (non-marking)
<b>Power</b>	
Battery	8x6V(220Ah)
Battery Charger	30A
Angle of Tilt Warning	2°(lateral)
Angle of Tilt Warning	3°(front & rear)
Charger	48V/30A
Hydraulic Tank	23L
Emergency Power System	Manual

# M Series Electric Articulating Boom Lift

 Electric




V14M

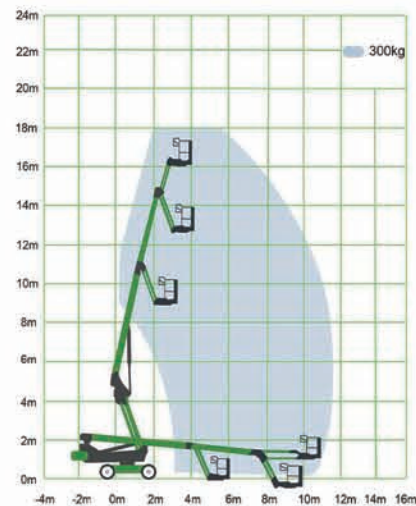


V16M

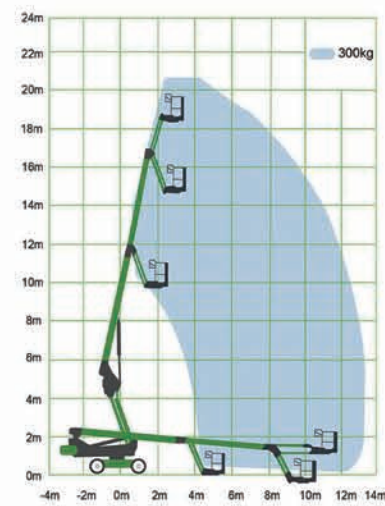
Model	V14M	V16M
<b>Specifications</b>		
Max. Working Height	15.8m	17.8m
Max. Platform Height	13.8m	15.8m
Max. Up and Over Clearance	7.1m	7.6m
Max. Working Radius	7.4m	8.9m
Platform Dimensions (Length x Width)	1.4*0.76m	1.4*0.7m
Length-Stowed	6.3m	6.9m
Width	1.95m	2.2m
Height-Stowed	2.0m	2.1m
Wheelbase	2.0m	2.36m
Ground Clearance-Center	0.25m	0.32m
<b>Productivity</b>		
Max. Lift Capacity	230kg	230kg
Platform Occupancy	2	2
Platform Rotation	±80°	±80°
Jib rotation	±70°	±70°
Turntable Rotation	355°	355°
Drive Speed-Stowed	5km/h	5km/h
Gradeability-Stowed	35%	30%
Max. Working Angle	3°	3°
Turning Radius (outside)	3.5m	4.7m
Drive and Steer	2×2	2×2
Weight	4860kg	6300kg
Tire	28*9-15	250-15
<b>Power</b>		
Battery	48V/220Ah	48V/300Ah
Pump Motor	4kw	4kw
Drive Motor	3.3kw	3.3kw
Control Voltage	12V/24V	12V/24V
Charger	48V/20A	48V/35A
Hydraulic Tank	20L	20L
Emergency Power System	12V/24V	12V/24V
<b>Optional</b>		
LFP Battery   Solid Non-marking Tires   Overload Alarm   Aluminum Alloy Work Platform		

# Electric Telescopic Boom Lift

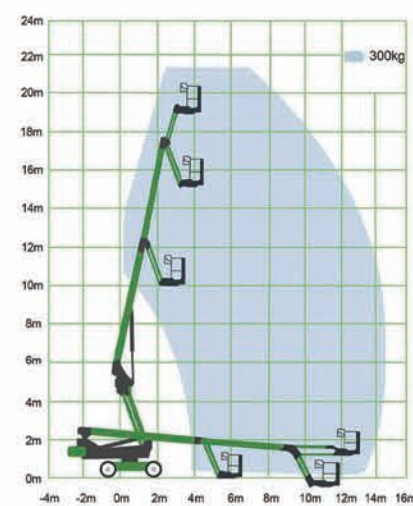
 Electric



J16



J18

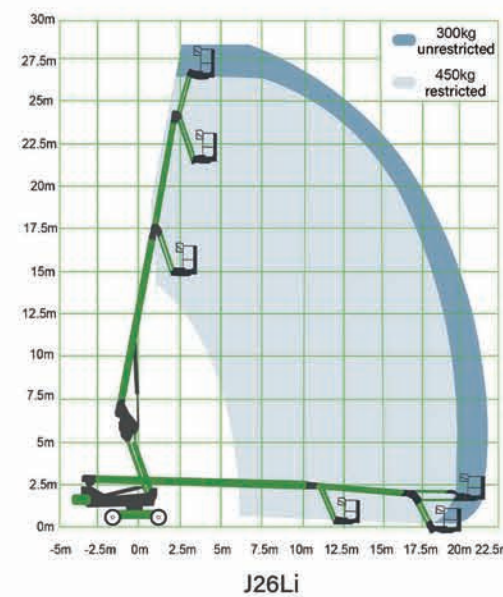
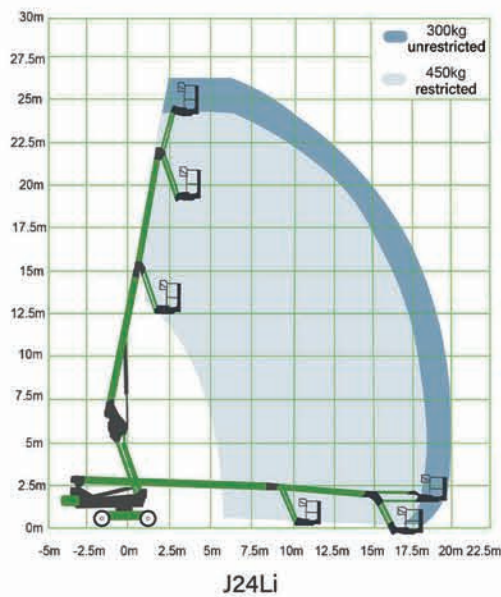


J20

Model	J16	J18	J20
<b>Specifications</b>			
Max. Working Height	18m	20.5m	21.6m
Max. Platform Height	16m	18.5m	19.6m
Max. Working Radius	11.2m	13.2m	14.5m
Platform Dimensions (Length x Width)	1.8*0.76m	1.8*0.76m	1.8*0.76m
Length	8.3m	9.8m	10.3m
Width	2.49m	2.49m	2.49m
Height	2.64m	2.64m	2.64m
Wheelbase	2.5m	2.5m	2.5m
Ground Clearance-Center	0.3m	0.3m	0.3m
Weight	7800kg	8520kg	9100kg
<b>Productivity</b>			
Max. Lift Capacity	300kg	300kg	300kg
Platform Occupancy	3	3	3
Platform Rotation	±80°	±80°	±80°
Vertical jib Rotation(up/down)	±70°	±70°	±70°
Turntable Rotation	360 ° continuous	360 ° continuous	360 ° continuous
Drive Speed-Stowed	5km/h	5km/h	5km/h
Gradeability-Stowed	45%	45%	45%
Max. Working Angle	5°	5°	5°
Turning Radius (outside)	4.18m	4.18m	4.18m
Drive and Steer	4×2	4×2	4×2
Tire	33×12-20	33×12-20	33×12-20
<b>Power</b>			
Battery	48V/400Ah	48V/400Ah	48V/400Ah
Pump Motor	12kw	12kw	12kw
Drive Motor	3.3kw	3.3kw	3.3kw
Control Voltage	12V	12V	12V
Charger	48V/60A	48V/60A	48V/60A
Hydraulic Tank	105L	105L	105L
Emergency Power System	12V	12V	12V
<b>Optional</b>			
LFP Battery		optional	


# Electric Telescopic Boom Lift

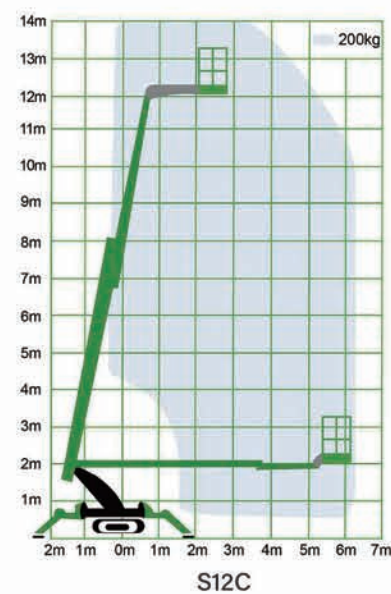
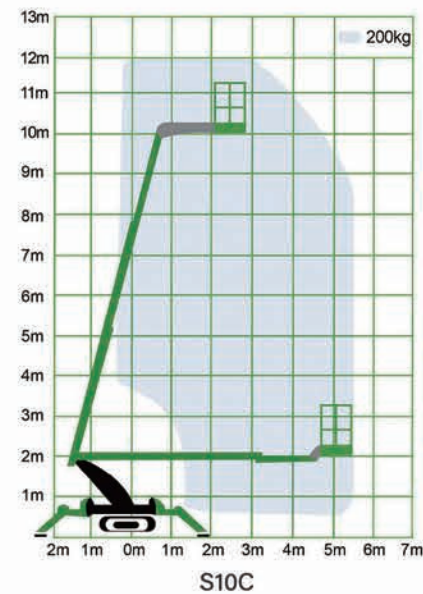
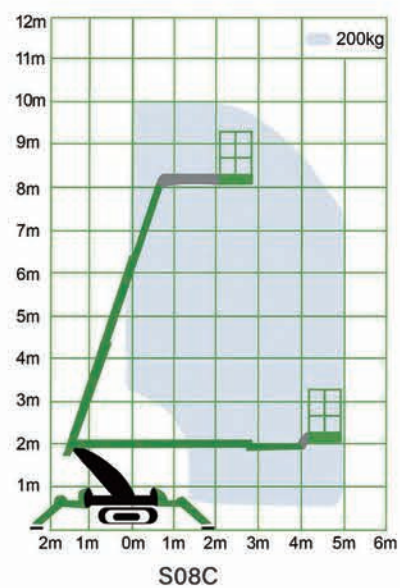
 Electric



Model	J24Li	J26Li
<b>Specifications</b>		
Max. Working Height	26.5m	28.3m
Max. Platform Height	24.5m	26.3m
Max. Working Radius	20m	21.5m
Platform Dimensions (Length x Width)	2.3*0.9m	2.3*0.9m
Length	10.9m	11.7m
Width	2.49m	2.49m
Height	2.92m	2.92m
Wheelbase	3.2m	3.2m
Ground Clearance-Center	0.47m	0.47m
Weight	14800kg	16100kg
<b>Productivity</b>		
Max. Lift Capacity	300kg (unrestricted)/450kg (restricted)	300kg (unrestricted)/450kg (restricted)
Platform Occupancy	3	3
Platform Rotation	±80°	±80°
Vertical jib Rotation(up/down)	±70°	±70°
Turntable Rotation	360 ° continuous	360 ° continuous
Drive Speed-Stowed	5km/h	5km/h
Gradeability-Stowed	45%	45%
Max. Working Angle	5°	5°
Turning Radius (outside)	6.5m	6.5m
Drive and Steer	4×2	4×2
Tire	385/65-24	385/65-24
<b>Power</b>		
Battery	80V/460Ah	80V/460Ah
Pump Motor	21kw	21kw
Drive Motor	5.2kw	5.2kw
Control Voltage	12V	12V
Charger	80V/40A	80V/40A
Hydraulic Tank	120L	120L
Emergency Power System	12V	12V
<b>Standard</b>		
LFP Battery		Standard

# Crawler Spider Boom Lift

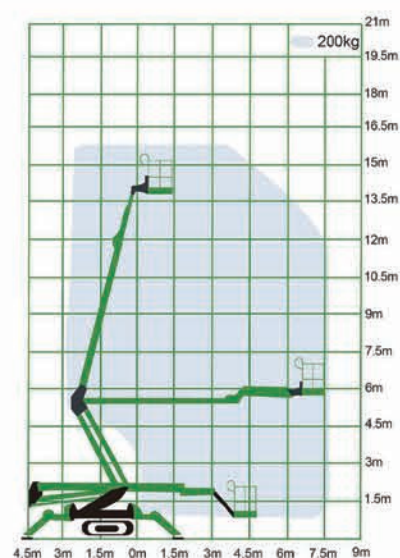
 Electric



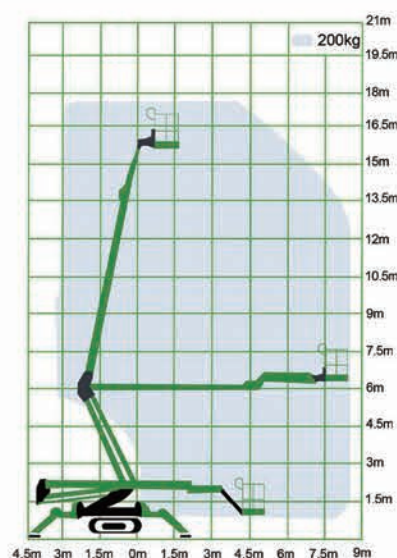
Model	S08C	S10C	S12C
<b>Specifications</b>			
Max. Working Height	10m	12m	14m
Max. Platform Height	8m	10m	12m
Max. Working Radius	5m	5.5m	6.2m
Platform Dimensions (Length x Width)	1.1X0.7m	1.1X0.7m	1.1X0.7m
Length	4.7m	5m	5.3m
Width	0.75m	0.75m	0.75m
Height	1.9m	1.9m	1.9m
Outrigger Footprint Length	4m	4m	4m
Outrigger Footprint Width	2.6m	2.6m	2.6m
Jib Rotation	-90°- 0°	-90°- 0°	-90°- 0°
Platform Rotation	±80°	±80°	±80°
Turntable Rotation	355°	355°	355°
Weight	1720kg	1790kg	1880kg
<b>Productivity</b>			
Max. Lift Capacity	200kg	200kg	200kg
Platform Occupancy	2	2	2
Driving Speed	2.5km/h	2.5km/h	2.5km/h
Driving Gradeability	25%	25%	25%
Max. Working Angle	10°	10°	10°
<b>Power</b>			
Pump Motor	4kw	4kw	4kw
Drive Motor	1.5kw	1.5kw	1.5kw
LFP Battery	48V/300Ah	48V/300Ah	48V/300Ah
Control Voltage	24V	24V	24V
Charger	48V/35A	48V/35A	48V/35A
Hydraulic Tank	20L	20L	20L

# Crawler Spider Boom Lift

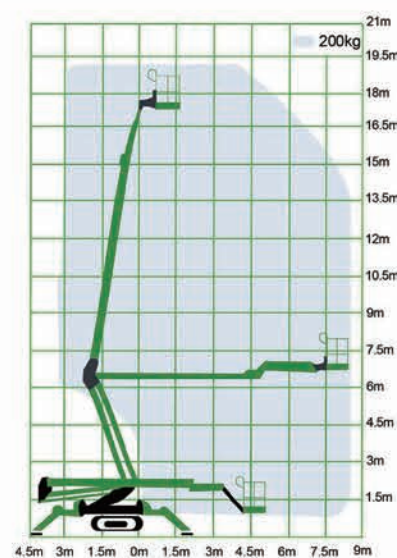
 Electric



S14C



S16C



S18C

Model	S14C	S16C	S18C
<b>Specifications</b>			
Max. Working Height	15.7m	17.7m	19.3m
Max. Platform Height	13.7m	15.7m	17.3m
Max. Working Radius	7.6m	8.6m	8.6m
Max. Up and Over Clearance	5.5m	6.0m	6.4m
Platform Dimensions (Length x Width)	1.1X0.7m	1.1X0.7m	1.1X0.7m
Length	4.8m	5.3m	5.7m
Width	0.85m	0.85m	0.85m
Height	2.0m	2.0m	2.0m
Outrigger Footprint Length	4.3m	4.3m	4.3m
Outrigger Footprint Width	4m	4m	4m
Jib Rotation	-90°- 0°	-90°- 0°	-90°- 0°
Platform Rotation	±80°	±80°	±80°
Turntable Rotation	355°	355°	355°
Weight	2300kg	2425kg	2460kg
<b>Productivity</b>			
Max. Lift Capacity	200kg	200kg	200kg
Platform Occupancy	2	2	2
Driving Speed	3km/h	3km/h	3km/h
Driving Gradeability	25%	25%	25%
Max. Working Angle	10°	10°	10°
<b>Power</b>			
Pump Motor	4kw	4kw	4kw
Drive Motor	1.5kw	1.5kw	1.5kw
LFP Battery	48V/300Ah	48V/300Ah	48V/300Ah
Control Voltage	24V	24V	24V
Charger	48V/35A	48V/35A	48V/35A
Hydraulic Tank	20L	20L	20L

# Towable Boom Lift

 Electric

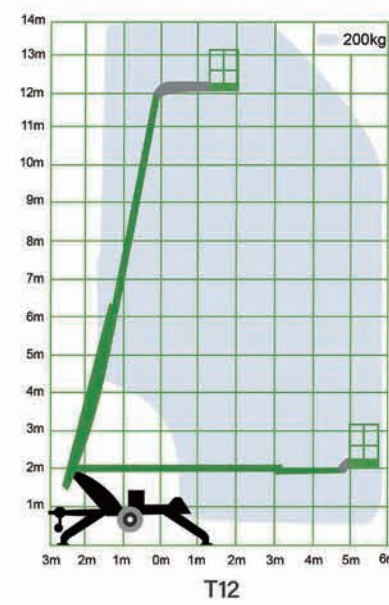
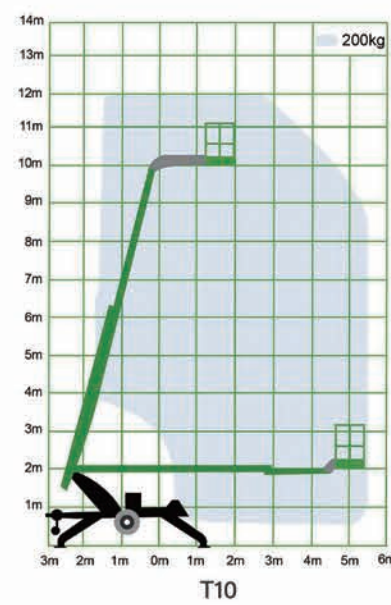
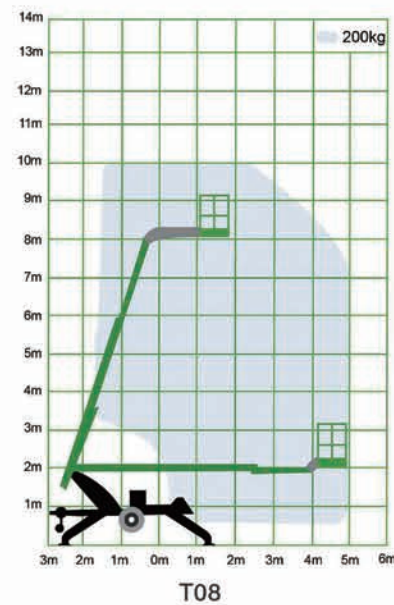


Model	T08	T10	T12
<b>Specifications</b>			
Max. Working Height	10m	12m	14m
Max. Platform Height	8m	10m	12m
Max. Working Radius	5m	5.5m	5.9m
Platform Dimensions (Length x Width)	1.1x0.7m	1.1x0.7m	1.1x0.7m
Length-Stowed	4.7m	5m	5.3m
Width-stowed	1.5m	1.5m	1.5m
Height-Stowed	1.9m	1.9m	1.9m
Length- Storage	4.3m	4.6m	4.9m
Outrigger Footprint Length	3.8m	3.8m	3.8m
Outrigger Footprint Width	2.8m	2.8m	2.8m
Ground Clearance(center)	0.35m	0.35m	0.35m
Weight	1490kg	1550kg	1640kg

<b>Productivity</b>			
Max. Lift Capacity	200kg	200kg	200kg
Platform Occupancy	2	2	2
Platform Rotation	±80°	±80°	±80°
Jib Rotation	-90°- 0°	-90°- 0°	-90°- 0°
Turntable Rotation	355°	355°	355°
Drive Speed-Stowed	70km/h	70km/h	70km/h
Gradeability	45%	45%	45%
Max. Working Angle	9°	9°	9°
Tire	205/70R15C	205/70R15C	205/70R15C

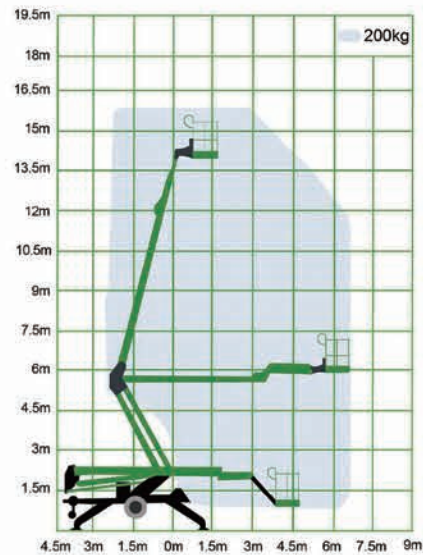
<b>Power</b>			
Battery	24V/220Ah	24V/220Ah	24V/250Ah
Pump Motor	4kw	4kw	4kw
Control Voltage	24V	24V	24V
Hydraulic Tank	20L	20L	20L
Emergency Power System	Manual Operation	Manual Operation	Manual Operation

**Optional**  
 Lithium Battery   Assisted Walking   Remote Control   Automatic Leveling   Diesel / Gasoline Power   AC Power

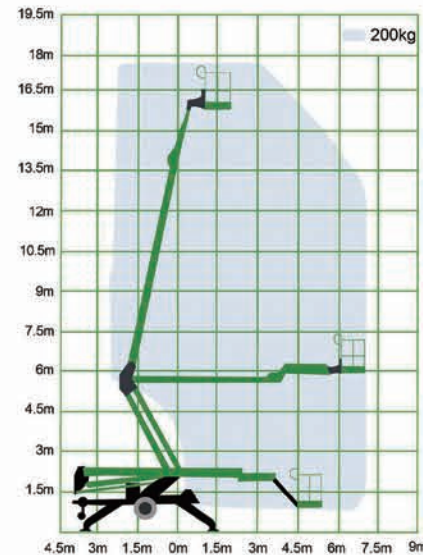


# Towable Boom Lift

 Electric



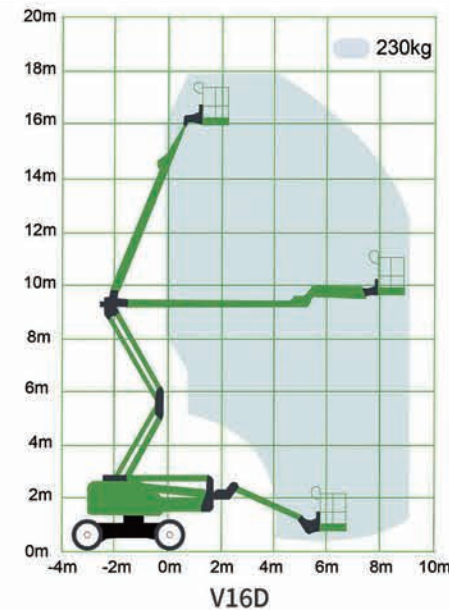
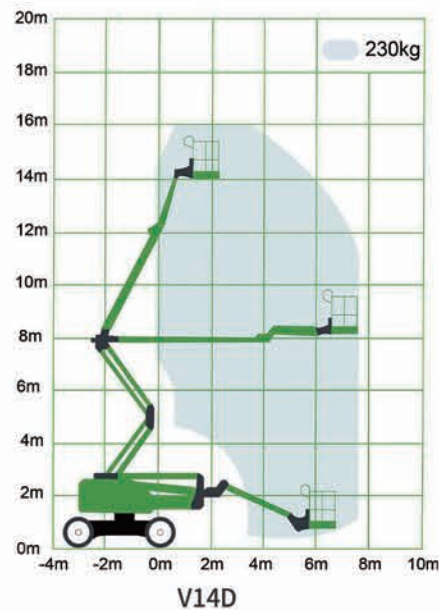
T14



T16

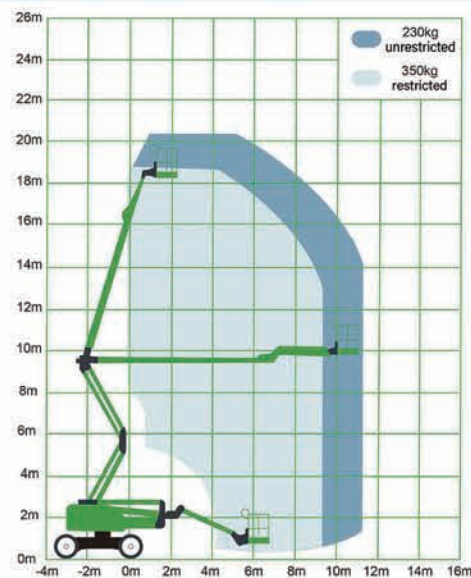
Model	T14	T16
<b>Specifications</b>		
Max. Working Height	15.8m	17.85m
Max. Platform Height	13.8m	15.85m
Max. Working Radius	6.6m	7.1m
Max. Up and Over Clearance	5.5m	6.0m
Platform Dimensions (Length x Width)	1.1x0.7m	1.1x0.7m
Length-Stowed	5.2m	5.7m
Width-stowed	1.6m	1.6m
Height-Stowed	2.15m	2.15m
Length- Storage	4.7m	5.2m
Outrigger Footprint Length	3.9m	3.9m
Outrigger Footprint Width	2.9m	2.9m
Ground clearance(center)	0.35m	0.35m
Weight	1900kg	1980kg
<b>Productivity</b>		
Max. Lift Capacity	200kg	200kg
Platform Occupancy	2	2
Platform Rotation	±80°	±80°
Jib Rotation	-90°- 0°	-90°- 0°
Turntable Rotation	355°	355°
Drive Speed-Stowed	70km/h	70km/h
Gradeability	45%	45%
Max. Working Angle	9°	9°
Tire	205/70R15C	205/70R15C
<b>Power</b>		
Battery	24V/220Ah	24V/220Ah
Pump Motor	4kw	4kw
Control Voltage	24V	24V
Hydraulic Tank	20L	20L
Emergency Power System	Manual Operation	Manual Operation
<b>Optional</b>		
Lithium Battery   Assisted Walking   Remote Control   Automatic Leveling   Diesel / Gasoline Power   AC Power		

# Diesel Articulating Boom Lift

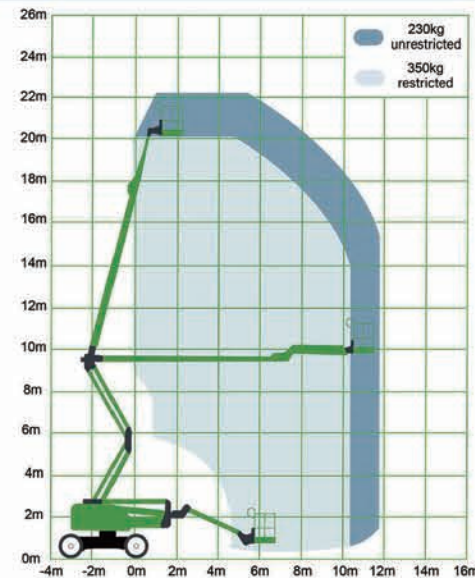


Model	V14D	V16D
<b>Specifications</b>		
Max. Working Height	16m	17.9m
Max. Platform Height	14m	15.9m
Max. Up and Over Clearance	7.2m	7.7m
Max. Working Radius	7.5m	8.9m
Platform Dimensions (Length x Width)	1.4x0.7m	1.4x0.7m
Length	6.73m	7.43m
Width	2.3m	2.3m
Height	2.2m	2.2m
Wheelbase	2.36m	2.36m
Ground Clearance-Center	0.38m	0.38m
Weight	6900kg	7450kg
<b>Productivity</b>		
Max. Lift Capacity	230kg	230kg
Platform Occupancy	2	2
Platform Rotation	160°	160°
Vertical Jib Rotation	±70°	±70°
Turntable Rotation	360° continuous	360° continuous
Platform Leveling	Automatic Leveling	Automatic Leveling
Drive Speed (stowed)	5.5km/h	5.5km/h
Drive Speed (extended)	0.8km/h	0.8km/h
Drive Gradeability	45%	45%
Turning Radius (inside)	3.2m	3.2m
Turning Radius (outside)	5.2m	5.2m
Drive&Steer Mode	4x2	4x2
Tire Type	33x12-20	33x12-20
<b>Power</b>		
Engine	KUBOTA	KUBOTA
Power	36.0kw/2600rpm	36.0kw/2600rpm
Fuel Tank Volume	68L	68L
Control Voltage	12V DC	12V DC
Emergency Power System	12V electric	12V electric
Hydraulic Tank	104L	104L

# Diesel Articulating Boom Lift



V18D

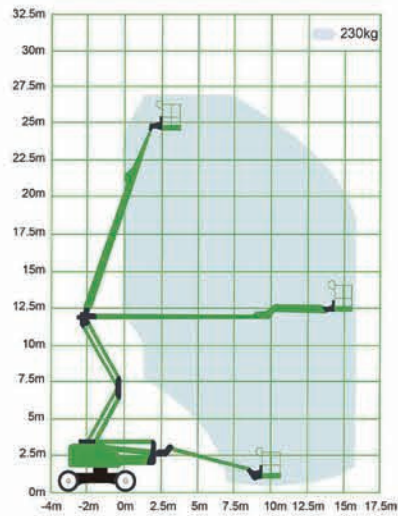


V20D

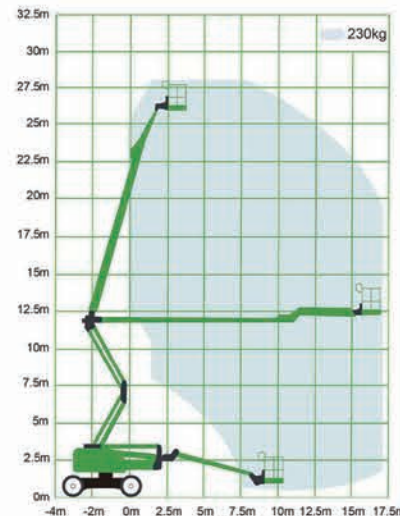
Model	V18D	V20D
<b>Specifications</b>		
Max. Working Height	20.2m	22.5m
Max. Platform Height	18.2m	20.5m
Max. Up and Over Clearance	8.0m	9.4m
Max. Working Radius	11.6m	11.8m
Platform Dimensions (Length x Width)	1.8x0.76m	1.8x0.76m
Length	8.50m	8.50m
Width	2.44m	2.44m
Height	2.40m	2.40m
Wheelbase	2.5m	2.5m
Ground Clearance-Center	0.38m	0.38m
Weight	9600kg	10100kg
<b>Productivity</b>		
Max. Lift Capacity	230kg (unrestricted)/350kg (restricted)	230kg (unrestricted)/350kg (restricted)
Platform Occupancy	2/3	2/3
Platform Rotation	160°	160°
Vertical Jib Rotation	±70°	±70°
Turntable Rotation	360° continuous	360° continuous
Platform Leveling	Automatic Leveling	Automatic Leveling
Drive Speed (stowed)	5.2km/h	5.0km/h
Drive Speed (extended)	0.8km/h	0.8km/h
Drive Gradeability	45%	45%
Turning Radius (inside)	3.2m	3.2m
Turning Radius (outside)	5.35m	5.35m
Drive&Steer Mode	4x2	4x2
Tire Type	33x12-20	33x12-20
<b>Power</b>		
Engine	KUBOTA	KUBOTA
Power	36.0kw/2600rpm	36.0kw/2600rpm
Fuel Tank Volume	105 L	105 L
Control Voltage	12V DC	12V DC
Emergency Power System	12V electric	12V electric
Hydraulic Tank	125L	125L

# Diesel Articulating Boom Lift

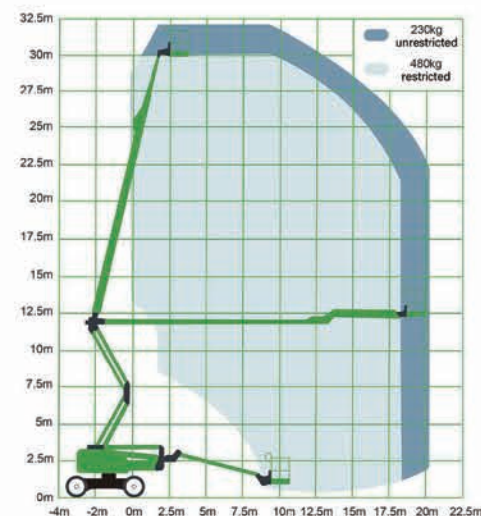
 Diesel



V24D



V26D

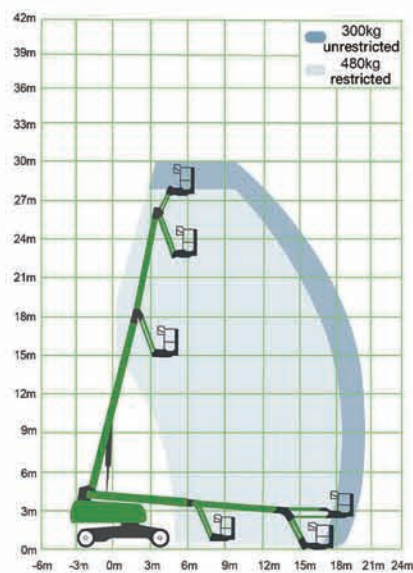


V30D

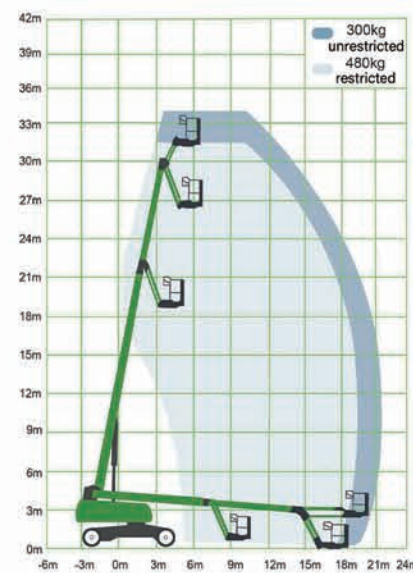
Model	V24D	V26D	V30D
<b>Specifications</b>			
Max. Working Height	26.2m	28m	32m
Max. Platform Height	24.2m	26m	30m
Max. Up and Over Clearance	10.2m	10.2m	12.2m
Max. Working Radius	15.4m	17.28m	20.2m
Platform Dimensions (Length x Width)	2.44x0.91m	2.44x0.91m	2.44x0.91m
Length	10.65m	11.7m	13.1m
Width	2.48m	2.58m	2.49m
Height	2.85m	2.97m	3.22m
Wheelbase	3m	3m	3.66m
Ground Clearance-Center	0.4m	0.43m	0.43m
Weight	16300kg	17000kg	18000kg
<b>Productivity</b>			
Max. Lift Capacity	230kg	230kg	230kg (unrestricted)/480kg (restricted)
Platform Occupancy	2	2	2
Platform Rotation	160°	160°	160°
Vertical Jib Rotation	±70°	±70°	±70°
Turntable Rotation	360° continuous	360° continuous	360° continuous
Platform Leveling	Automatic Leveling	Automatic Leveling	Automatic Leveling
Drive Speed (stowed)	4.2km/h	4.2km/h	4.4 km/h
Drive Speed (extended)	1.1km/h	1.1km/h	1.1km/h
Drive Gradeability	45%	40%	40%
Turning Radius (inside)	2.66m	2.66m	2.74m
Turning Radius (outside)	5.85m	5.2m	5.85m
Drive&Steer Mode	4x2	4x2	4x4
Tire Type	36x14-20	385/65-22.5	385/65-22.5
<b>Power</b>			
Engine	CUMMINS	CUMMINS	CUMMINS
Power	43kw/2200rpm	54kw/2400rpm	54kw/2400rpm
Fuel Tank Volume	151L	151L	151L
Control Voltage	12V	12V	12V

# Diesel Telescopic Boom Lift

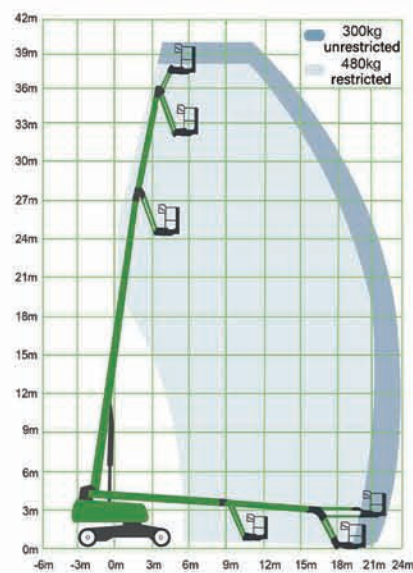
 Engine



J28D



J32D



J38D

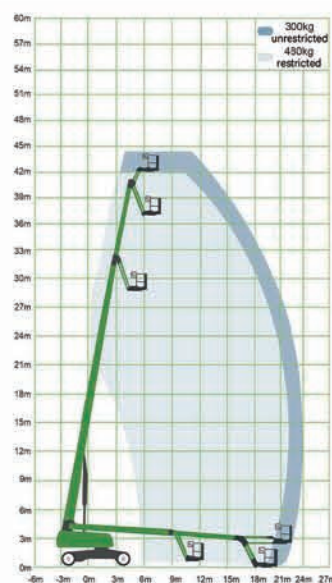
Model	J28D	J32D	J38D
<b>Specifications</b>			
Max. Working Height	30m	34m	40.4m
Max. Platform Height	28m	32m	38.4m
Max. Operating Radius	20.6m	21.4m	24m
Platform Dimensions (L*W)	2.44×0.91m	2.44×0.91m	2.44×0.91m
Length (Stowed)	12.79m	14.17m	14.1m
Width (Stowed)	2.58m	2.5m	2.49m
Height (Stowed)	2.87m	3.09m	3.08m
Wheelbase	3m	3.66m	3.96m
Ground Clearance	0.43m	0.4m	0.28m
Weight	16800kg	19250kg	22900kg
<b>Productivity</b>			
Max. Lift Capacity	300kg (unrestricted)/480kg (restricted) 300kg (unrestricted)/480kg (restricted) 300kg (unrestricted)/480kg (restricted)		
Platform Occupancy	2	2	2
Platform Rotation	±90°	±90°	±90°
Turntable Rotation	360° continuous	360° continuous	360° continuous
Platform Leveling	Automatic Leveling	Automatic Leveling	Automatic Leveling
Drive Speed (Stowed)	5km/h	5km/h	5km/h
Drive Speed (Extended)	1.1km/h	1.1km/h	1.1km/h
Drive Gradeability	24°(45%)	24°(45%)	24°(45%)
Turning Radius (Inside)	3.59m	4.14m	4.14m
Turning Radius (Outside)	5.95m	6.56m	7.02m
Drive & Steer Mode	4×2	4×4	4×4
Tire Type	385/65-22.5	385/65-22.5	385/65-22.5
<b>Power</b>			
Engine	CUMMINS	CUMMINS	CUMMINS
Power	53kw/2200rpm	54kw/2400rpm	54kw/2400rpm
Fuel Tank Volume	151L	151L	151L
Control Voltage	12V	12V	12V

# Diesel Telescopic Boom Lift

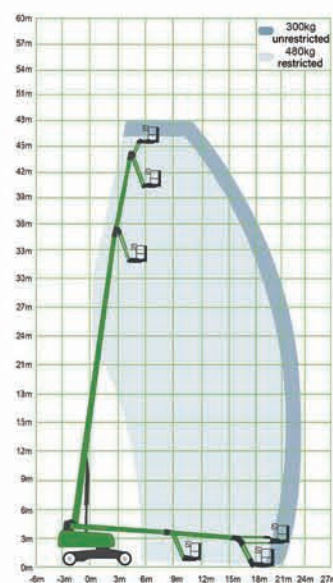
 Engine



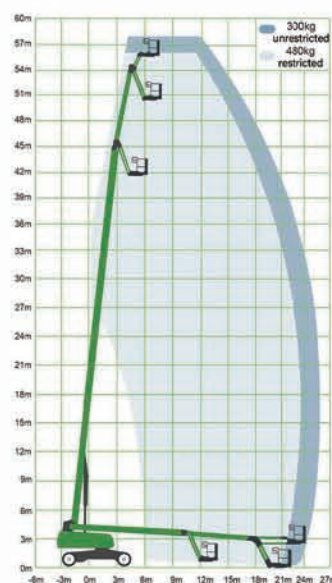
Model	J42D	J46D	J56D
<b>Specifications</b>			
Max. Working Height	44m	48m	58m
Max. Platform Height	42m	46m	56m
Max. Operating Radius	24m	23.6m	26m
Platform Dimensions (L*W)	2.44x0.91m	2.44x0.91m	2.44x0.91m
Length (Stowed)	13m	17.8m	14.9m
Width (Stowed)	2.49m	4.1m	5.1m
Height (Stowed)	3.1m	3.14m	3.15m
Wheelbase	3.96m	3.96m	5.6m
Ground Clearance	0.28m	0.4m	0.38m
Weight	24600kg	23110 kg	27500kg
<b>Productivity</b>			
Max. Lift Capacity	300kg (unrestricted)/480kg (restricted)	300kg (unrestricted)/480kg (restricted)	300kg (unrestricted)/480kg (restricted)
Platform Occupancy	2	2	2
Platform Rotation	±90°	±90°	±90°
Turntable Rotation	360° continuous	360° continuous	360° continuous
Platform Leveling	Automatic Leveling	Automatic Leveling	Automatic Leveling
Drive Speed (Stowed)	4.4km/h	4.4km/h	4.4km/h
Drive Speed (Extended)	1.1km/h	1.1km/h	1.1km/h
Drive Gradeability	21.8°(40%)	21.8°(40%)	21.8°(40%)
Turning Radius (Inside)	4.14m	4.14m	7.6m
Turning Radius (Outside)	7.02m	7.02m	10m
Drive & Steer Mode	4x4	4x4	4x4
Tire Type	385/65-22.5	445/50D710	445/65-24
<b>Power</b>			
Engine	CUMMINS	CUMMINS	CUMMINS
Power	53kw/2200rpm	54kw/2400rpm	74kw/2400rpm
Fuel Tank Volume	151L	151L	200L
Control Voltage	12V	12V	24V



J42D



J46D



J56D

